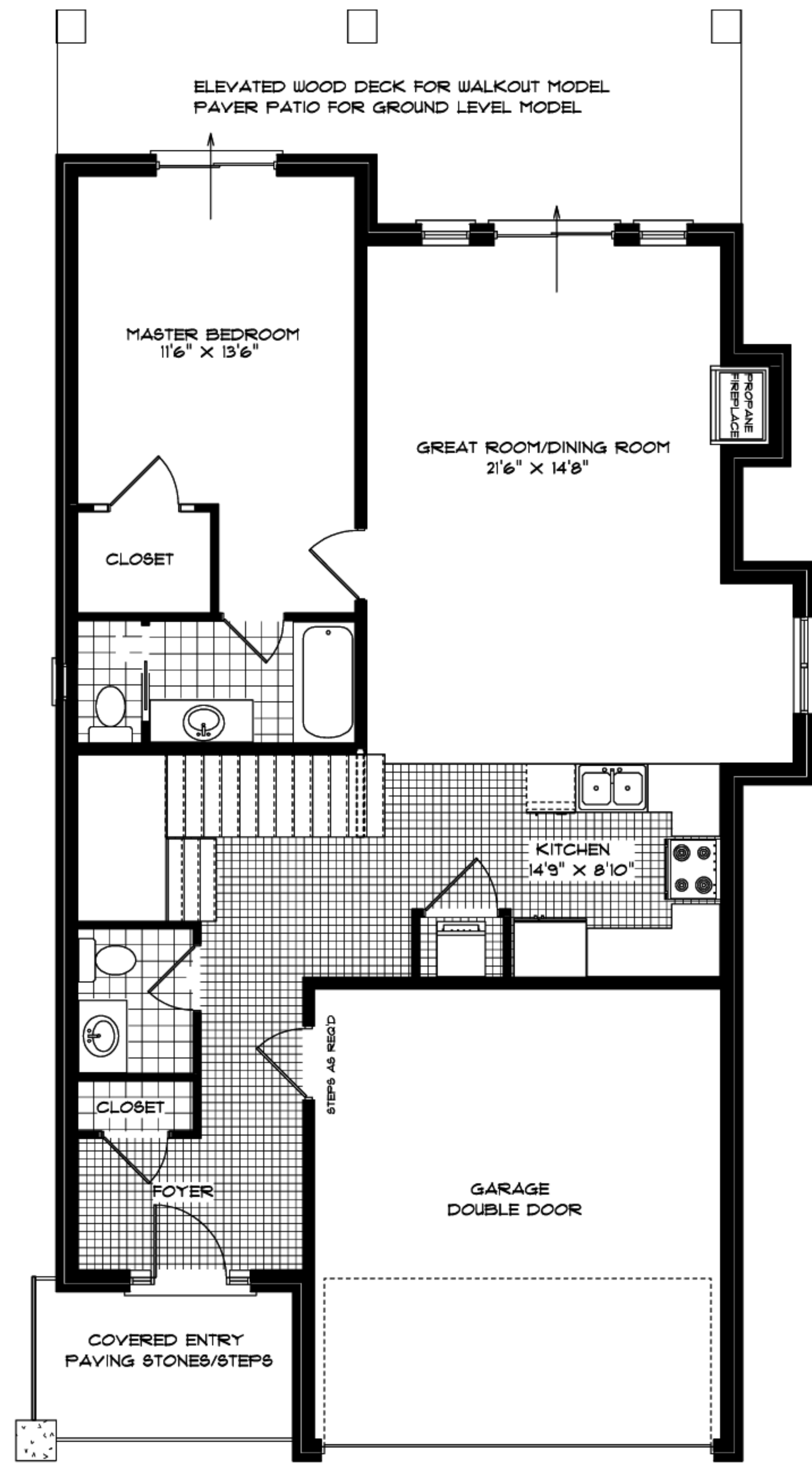
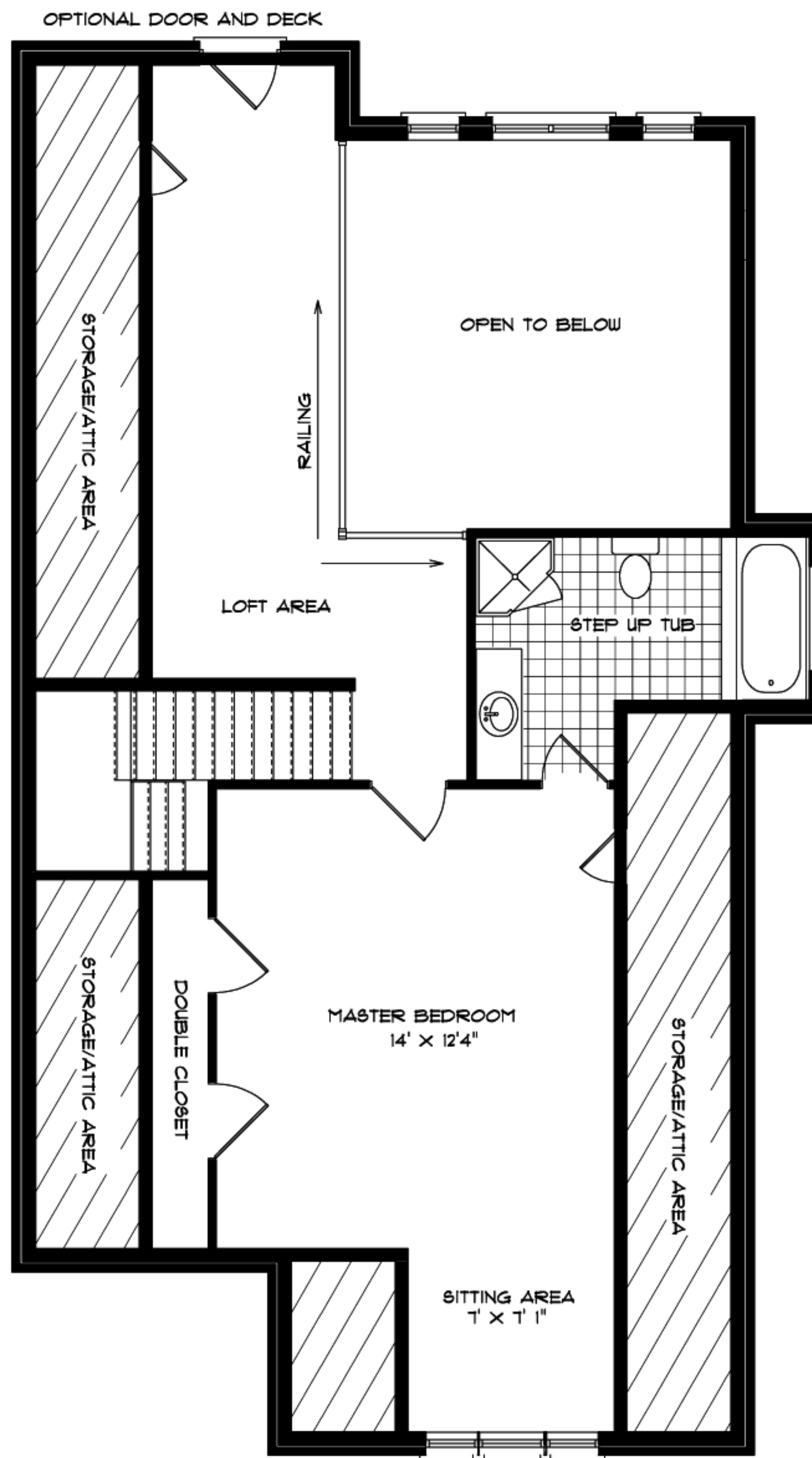


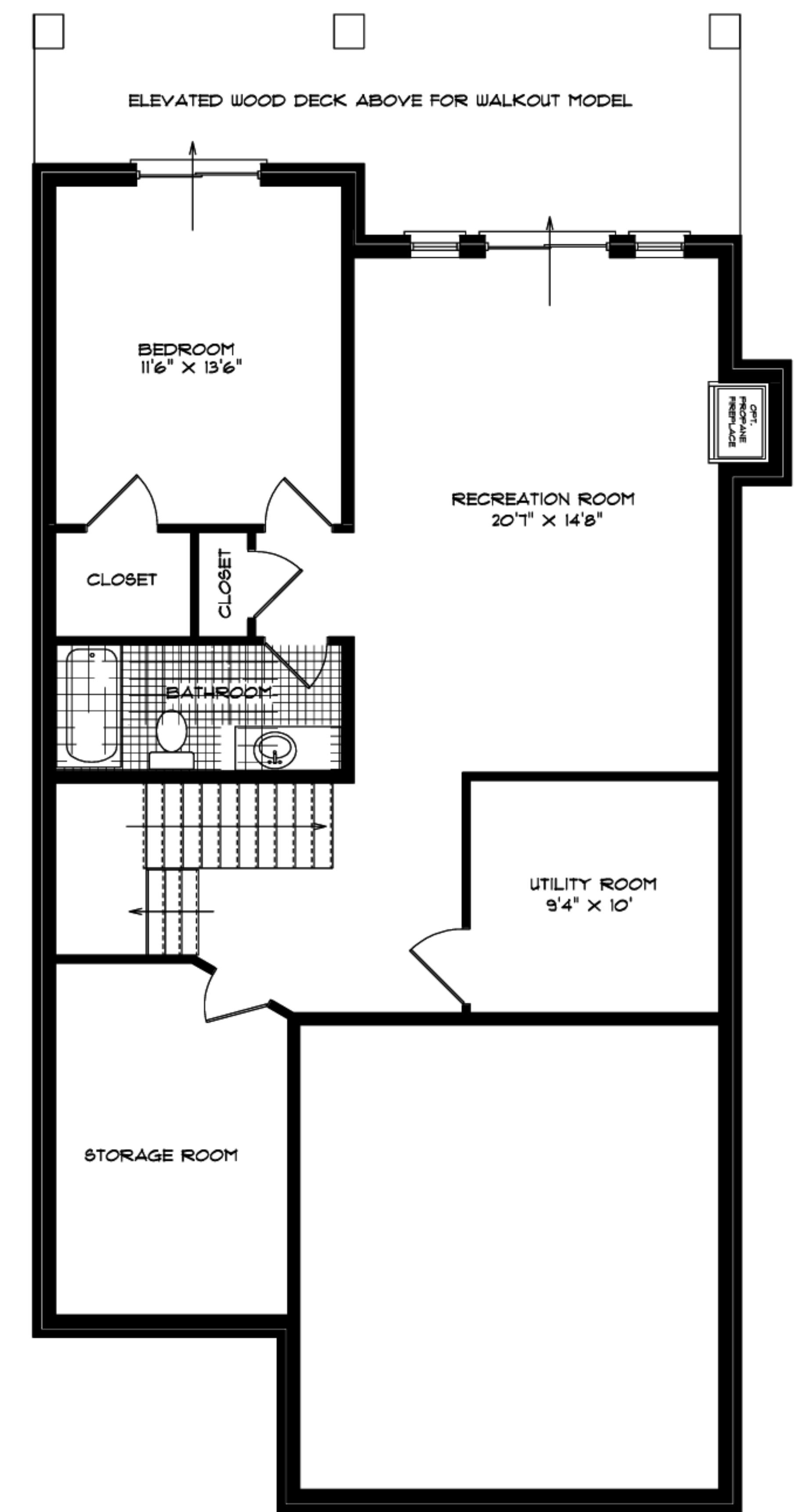
Southwind - Plan B



FIRST FLOOR PLAN
Area: 1166 sq. ft.
Total Area: 2231 sq. ft. (Including basement)



OPTIONAL LOFT FLOOR PLAN
Area: 1065 sq. ft.



OPTIONAL BASEMENT FLOOR PLAN
Area: 812 sq. ft.